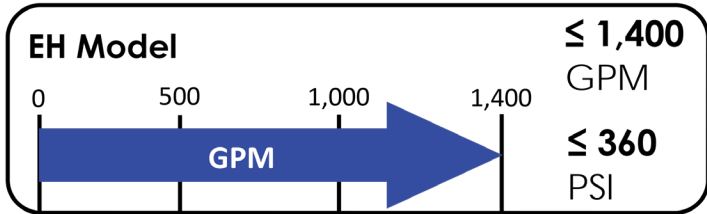
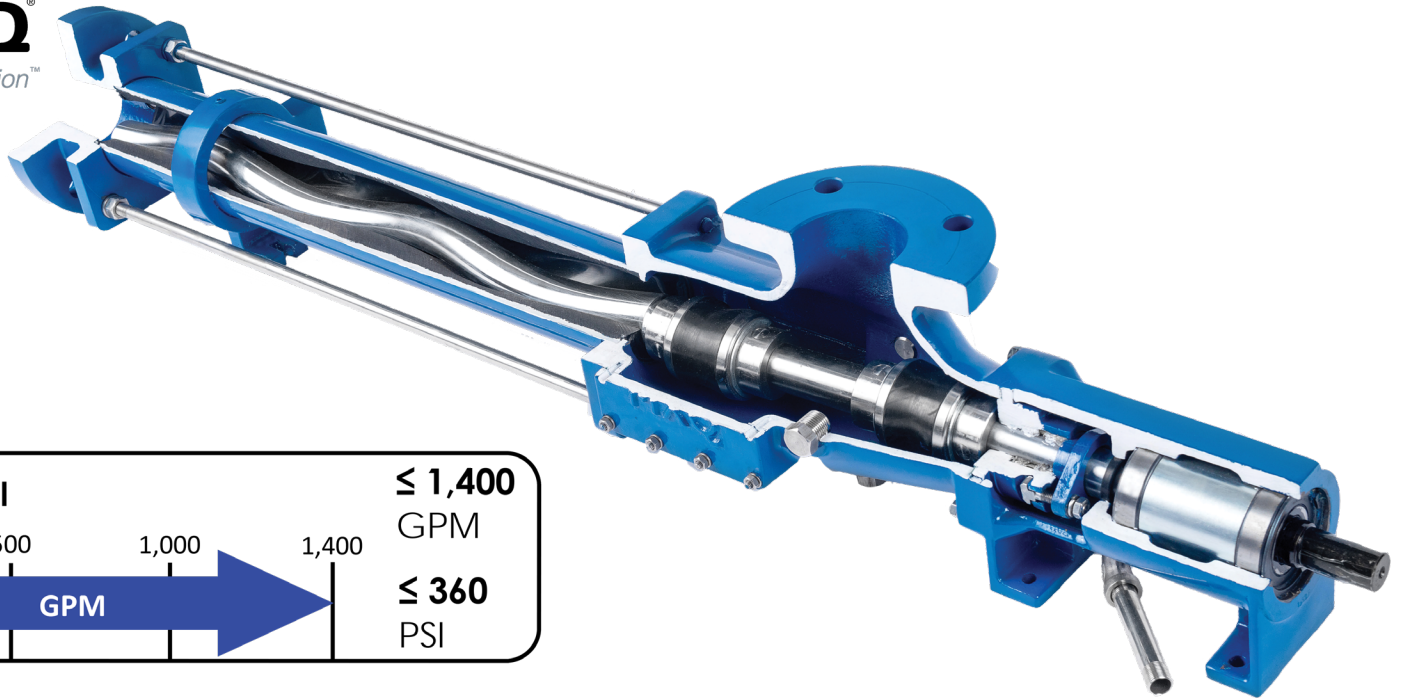




# EH MODEL

## MXQ Progressive Cavity Pumps



### CHARACTERISTICS

- 100% Bornemann Equivalent
- Wide range of applications
- Smooth & continuous flow
- Low pulsation
- Capacities up to *1,400 GPM*
- Differential pressures up to *360 PSI*
- Can pass solids up to 3"

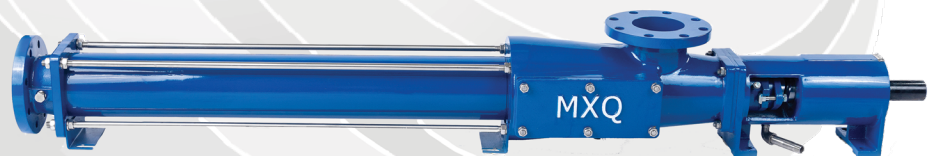
### MATERIALS OF CONSTRUCTION

<b>Casing</b>	GG-25, 1.4408, 1.4571, 1.4462
<b>Rotor</b>	C45 Hard Chrome, 1.4571, 1.4462
<b>Shaft</b>	1.4021, 1.4571, 1.4462
<b>Stator</b>	SBR, NBR, HNBR, FKM, IIR, CSM, EPDM

### PUMP DESCRIPTION

The EH model is one of the best progressive cavity pumps on the market. There are many standard features that set it apart from the competition, such as:

- ⇒ Cardan Style Universal Joints
- ⇒ Elongated Profile
- ⇒ SS Internal Shafting & Hardware
- ⇒ Bronze Lantern Packing Ring
- ⇒ Access Ports on Suction Casing
- ⇒ Drain Pipe on Stuffing Box
- ⇒ Stuffing Box Flush Connections
- ⇒ Pressure Gauge Fittings



# EH MODEL

## Pump Performance By Model

Model	RPM*	1 stage=90psi (GPM)	2 stage=180 psi (GPM)	4 stage=360 psi (GPM)
EH 164	100	1.5	.75	.30
EH 236	100	3	1.5	.75
EH 375	100	6	3	1.5
EH 600	100	12	6	3.0
EH 1024	100	24	12	6.0
EH 1500	100	50	24	12.5
EH 1900	100	100	50	25
EH 2650	100	150	75	37.5
EH 4500	100	250	125	-
EH 6300	100	350	175	-

\*Maximum operating speed is 400 RPM

